



# INDUSTRIAL COMPUTER VISION

**Ricardo Ribalda, PhD**

*Product Engineering Leader*

# HISTORY OF COMPUTER VISION

1969

Invention of CCD

*W.S. Boyle & G.E. Smith*



1972

SRI Vision Module



1980

Custom-designed computer vision systems are being applied to specific manufacturing tasks. Current development may lead to general-purpose systems for a broad range of industrial applications.

*Gerald J. Agin, 1980*  
*Stanford Research Institute*

"Computer vision systems for industrial inspection and assembly." *Computer 5* (1980): 11-20.





# NATURE LIKES DIVERSITY

# LET'S COUNT SOME POTATOES

GREEN SPOT



BLACK SPOT



SCURF



GOLF BALL



GREY DAMAGE



ROT



FRESH CUT

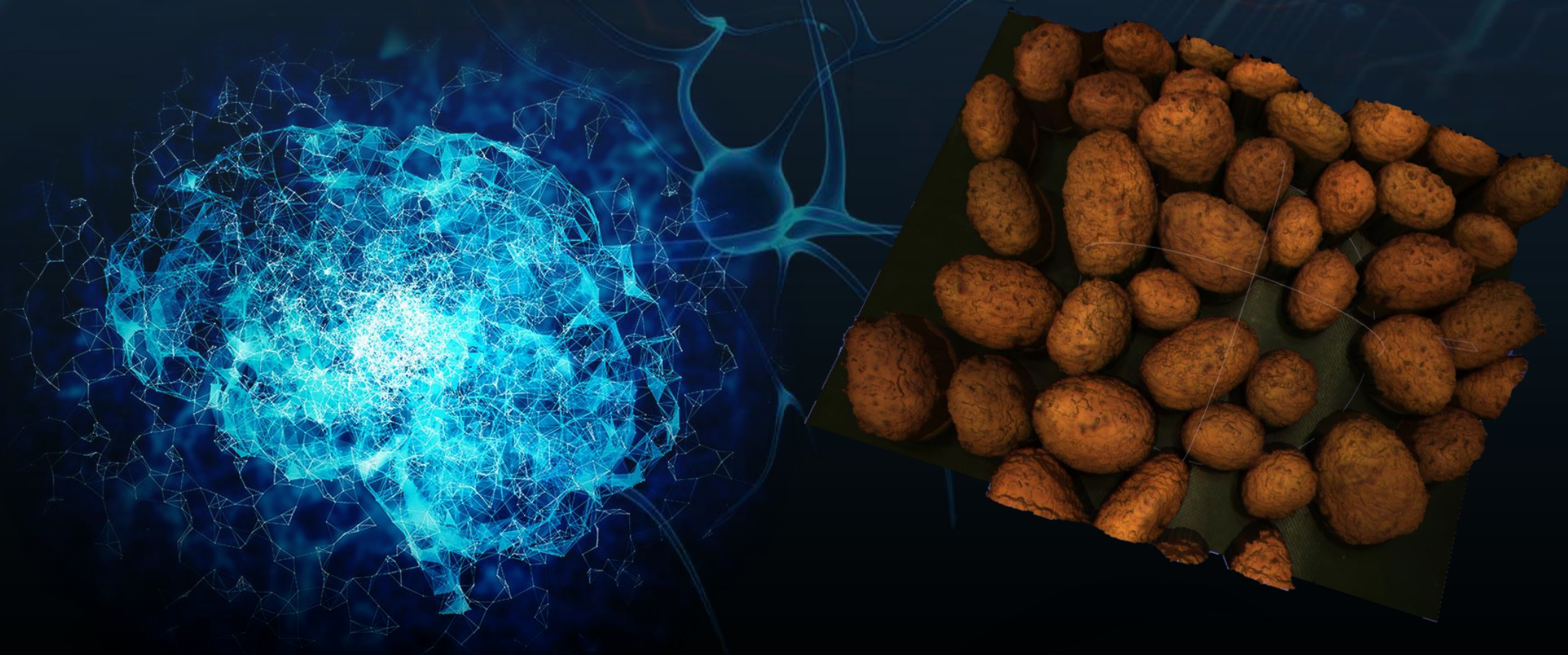


POTATO FRUIT



# HOW IT IS DONE?

LOTS OF NEURAL NETWORKS AND 3D



# POTATO GRADER: CELOX

2002



2005



2009

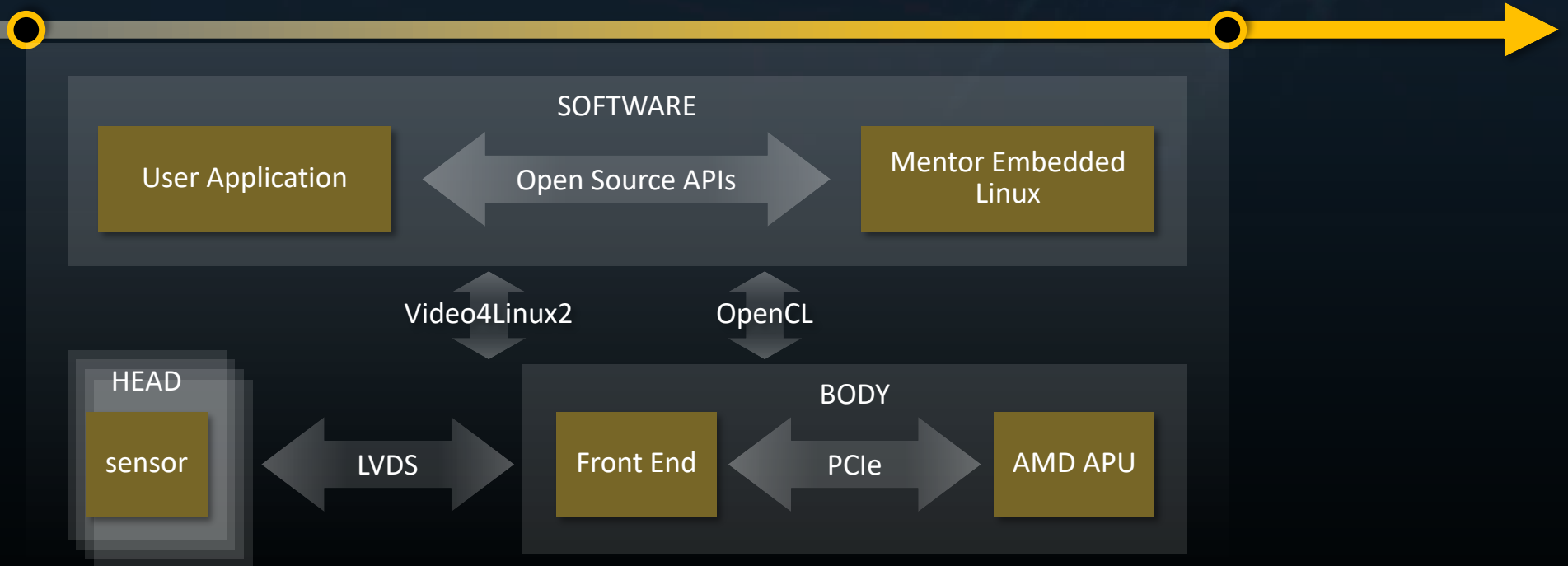


# GENERIC VISION PLATFORM

2012-2018

2012

2018



# GENERIC VISION PLATFORM

BATCH ANALYZER

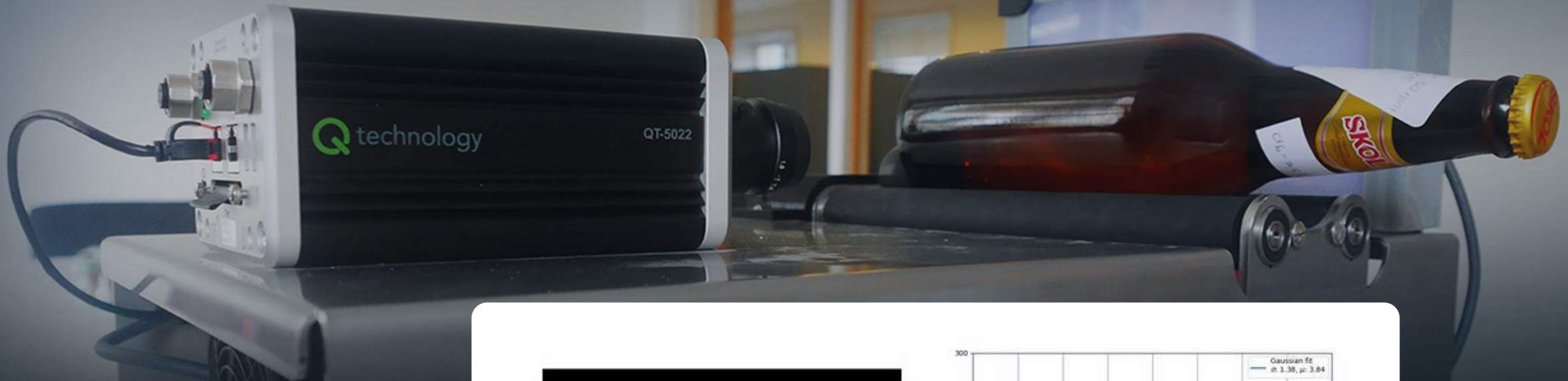


CHECKWEIGHER

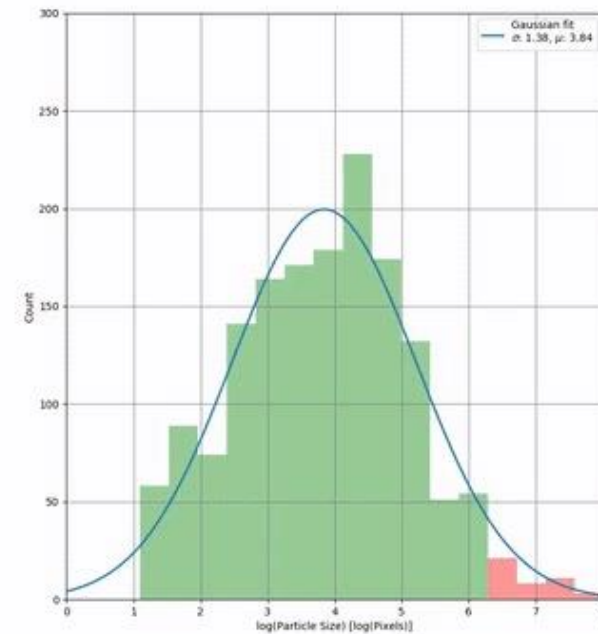
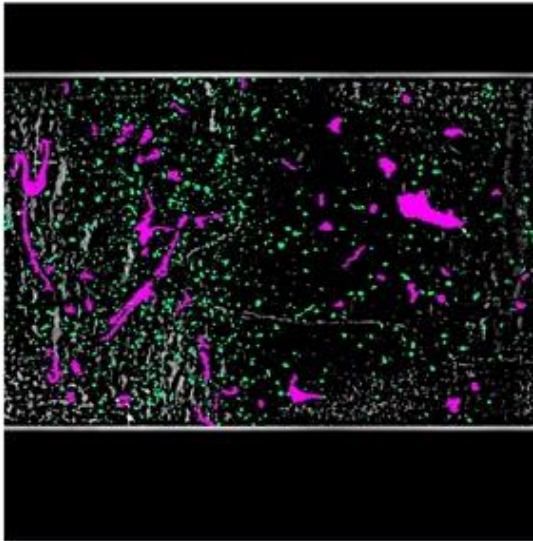


SPECTRAL CAMERA





See in Action at  
**AMD Booth #1-360**



# FUTURE

Qtec.com

